



## SPAULDING SERIES™ Aseptic Disconnects

Providing a leak-free connection, the Spaulding Series™ Aseptic Disconnects eliminate the need for pinch clamps and tube welders. Smooth disconnects are achievable with the easy-to-use design, and valuable fluids are protected by valves that automatically shut off flow when the fittings are disconnected. Available in USP Class VI, ADCF Polysulfone, validation and test results confirm their suitability in pre-sterilized systems and are also gamma radiation stable. These connectors are interchangeable with similar plastic connectors.

### FEATURES & BENEFITS

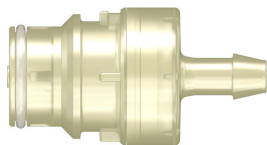
- Valves that are automatically shut off flow at disconnection
- Interchangeable with other plastic connectors
- Plugs and caps available to maintain fluid path integrity
- Made with BSE/TSE-free materials
- Validation and test results confirm their suitability in pre-sterilized systems
- Materials satisfy USP Class VI criteria
- Fittings meet industry requirements
- Aseptic disconnect operation

### SPECIFICATIONS

- **Materials:**
  - USP Class VI, ADCF Polysulfone
  - Platinum-cured, USP Class VI silicone o-rings
  - 316 stainless steel springs
- **Leak Resistance:**
  - 125 psi, 8.62 bar
- **Operating Temperature:**
  - -40° F (-40° C) to 280° F (138° C)
- **Sterilization:**
  - Gamma radiation up to 50kGy, autoclavable up to 270° F (132° C) for a maximum of 60 minutes

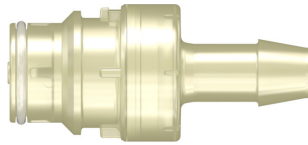
# SPAULDING SERIES™ Aseptic Disconnects

## Non-Valved Connectors



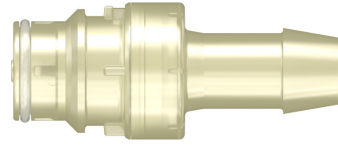
### **SDAM655NPS-001**

Male Open Flow Connector, 600 Series Barb, 1/4" (6.4 mm) ID Tubing, Animal-Free Polysulfone, Silicone O-Ring



### **SDAM670NPS-001**

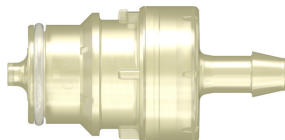
Male Open Flow Connector, 600 Series Barb, 3/8" (9.5 mm) ID Tubing, Animal-Free Polysulfone, Silicone O-Ring



### **SDAM680NPS-001**

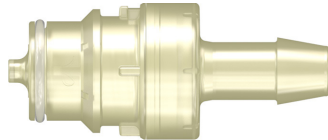
Male Open Flow Connector, 600 Series Barb, 1/2" (12.7 mm) ID Tubing, Animal-Free Polysulfone, Silicone O-Ring

## Valved Connectors



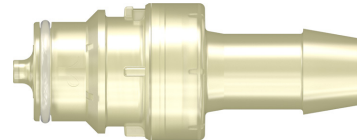
### **SDAVM655NPS-001**

Male Valved Connector, 600 Series Barb, 1/4" (6.4 mm) ID Tubing, Animal-Free Polysulfone, Silicone O-Ring



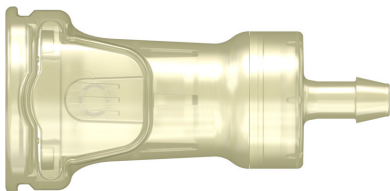
### **SDAVM670NPS-001**

Male Valved Connector, 600 Series Barb, 3/8" (9.5 mm) ID Tubing, Animal-Free Polysulfone, Silicone O-Ring



### **SDAVM680NPS-001**

Male Valved Connector, 600 Series Barb, 1/2" (12.7 mm) ID Tubing, Animal-Free Polysulfone, Silicone O-Ring



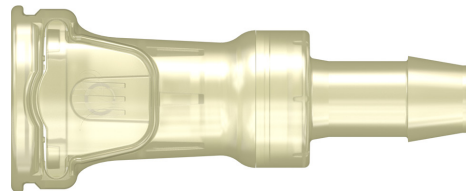
### **SDAVF655NPS-001**

Female Valved Connector, 600 Series Barb, 1/4" (6.4 mm) ID Tubing, Animal-Free Polysulfone, Silicone O-Ring



### **SDAVF670NPS-001**

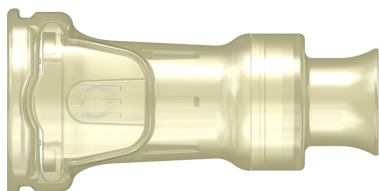
Female Valved Connector, 600 Series Barb, 3/8" (9.5 mm) ID Tubing, Animal-Free Polysulfone, Silicone O-Ring



### **SDAVF680NPS-001**

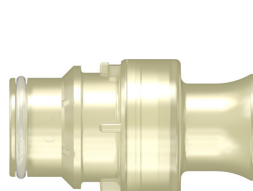
Female Valved Connector, 600 Series Barb, 1/2" (12.7 mm) ID Tubing, Animal-Free Polysulfone, Silicone O-Ring

## Cap Connector



### **SDAFCNPS-001**

Female Cap Connector, Animal-Free Polysulfone



### **SDAMPNPS-001**

Male Plug Connector, Animal-Free Polysulfone, Silicone O-Ring

## Plug Connector